

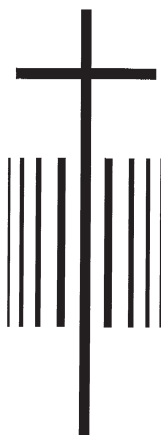
Ascension Lutheran



60th Anniversary

2019-2020 Guide Book & Directory

Ascension Lutheran Church



A Multisite Ministry

www.ascension-lcms.org

Facebook: /ascensionks

Twitter: @AscLutheranKS

Tyler Campus

842 N. Tyler Road, Wichita, KS 67212

(316) 722-4694

Maple Campus

12885 W. Maple, Wichita, KS 67235

(316) 721-5675

Dear Members and Friends,

“May the God of peace, who through the blood of the eternal covenant brought back from the dead our Lord Jesus, that great Shepherd of the sheep, equip you with everything good for doing his will, and may he work in us what is pleasing to him, through Jesus Christ, to whom be glory for ever and ever.”

Hebrews 13:20-21

It is a profound privilege as children of God to be ambassadors of peace. No wonder St. Paul encouraged his churches so often to live in peace as a witness of faith. When your life exhibits peace, people want to be around you. This opens many opportunities for you to share with others the reason for the peace in your life - the Lord Jesus, that great Shepherd of the sheep.

This directory gives you a quick way to be ambassadors of peace. A word of unexpected encouragement profits much. It changes lives and blesses people. Encouraging words don't cost a lot, but they pay huge dividends. When was the last time you called someone just to say, “I care”?

Thanks, once again, to our sponsors for your contribution.

With warm regards,

A handwritten signature in black ink that reads "Rev. Michael Bingenheimer". The script is cursive and fluid.

Pastor Mike Bingenheimer

Ascension Lutheran Church

Ascension's Mission is to CONNECT people to Jesus Christ, to GROW into spiritual maturity, and to SERVE our God and neighbor.

Our Core Values are:

ACTIVELY pursuing "The Great Commission"

SERVICE to God and one another

CHRIST centered

EXCELLENCE to the Glory of God

NEEDS sensitive

SEEKING to make disciples

INCLUSIVE of all in ministry

OUTREACH oriented

NURTURING the family

Worship Services

Tyler Campus

8:30 a.m. - Early Service

9:45 a.m. - Sunday School and Adult Classes

11:00 a.m. - Worship Service

Worship is a more traditional experience. This service uses traditional liturgy, hymns, a beautiful organ and grand piano. A nursery is provided for children through 3 years of age for both worship services.

Maple Campus

5:30 p.m. - Saturday Evening Service

9:00 a.m. - Sunday School and Adult Classes

10:00 a.m. - Sunday Worship Service

Worship is more contemporary. These services have a more casual dress and atmosphere. A band provides music since no organ is available. We worship in our Open Arms daycare facility. A nursery is provided for children through 3 years of age for the 5:30 p.m. and the 10:00 a.m. worship services.

Multi-Media Ministry

An Ascension worship service is recorded and broadcast weekly on Sundays at 7:30 a.m. Retro 30.1 and at 8:00 a.m. on KGPT 26.1. The sermon is available on the web at www.ascension-lcms.org. If you know of someone who would benefit from this Word of God, pass it along.

Special Worship Services

Tyler Campus

November 27	Thanksgiving Eve	7:00 p.m.
Dec 4, 11, 18.....	Mid-Week Advent Services	6:00 p.m.
December 8.....	Choral Services	8:00 & 11:00 a.m.
December TBA	Children's Christmas Worship	TBA
December 24.....	Christmas Eve ..	4:30, 6:30 & 11:00 p.m.
December 25.....	Christmas Day	10:00 a.m.
February 26.....	Ash Wednesday	7:00 p.m.
March 4, 11, 18, 25 & April 1		
.....	Mid-Week Lent Services	6:00 p.m.
April 9.....	Maundy Thursday	7:00 p.m.
April 10.....	Tre Ore	12:00 p.m.
April 10.....	Good Friday	7:00 p.m.
April 12.....	Easter Services .	7:00, 9:00 & 11:00 a.m.
April 26.....	Jr. Confirmation	11:00 a.m.

Maple Campus

December 24.....	Christmas Eve.....	4:30 & 6:30 p.m.
February 26.....	Ash Wednesday.....	7:00 p.m.
April 12.....	Easter.....	9:00 & 10:45 a.m.
April 26.....	Jr. Confirmation.....	10:00 a.m.

Ministry Staff

Church Office: 316-722-4694

Fax: 316-729-7027

Director of Ministries	Pastor Michael Bingenheimer
	gobing@hotmail.com
Director of Outreach	Pastor Scott Goltl
	maplecampus@gmail.com
Vicar.....	Zach Huffman
	vicar@ascension-lcms.org
Education Coordinator	Beth Ortstadt
	alceducation@yahoo.com
Youth Facilitator	Cyndy Bressler
	cynbressler@yahoo.com

Church Support Staff

Business Administrator	Chris Trull
	ctrull@ascension-lcms.org
Parish Secretary	Adrienne Banta-Brown
	abanta@ascension-lcms.org
Communications Coordinator	Molly Obermueller
	mobermueller@ascension-lcms.org
Facilities Manager	Marty Smarsh
	msmarsh@ascension-lcms.org

Ascension Lutheran Preschool

Website: alcpreschool.blogspot.com

Office: 316-722-4694

Email: preschool@ascension-lcms.org

Our preschool is located at the Tyler Campus at 842 N. Tyler. Our school year runs from Labor Day until Mid-May. We provide a loving, Christian environment for children 3-5 years of age to learn and grow in. During our two and one-half hour sessions, we focus on dramatic and imaginative play, gross and fine motor skills, language arts, math, music and movement, critical thinking and problem solving skills, science, and social skills. If you are interested in enrolling your preschooler, please call the church office or one of the staff members below.

Director/Teacher.....	Kendra Herbig.....	285-6432
Teacher	Debbie Goltl.....	722-3691
Teacher	Chantel Dehncke.....	990-6225

Open Arms Lutheran Child Development Center

www.openarmswichita.com

Office: 316-721-5675

Fax: 316-721-5690

Our center is located at 12885 W. Maple, Wichita, KS. We're one half-mile east of 135th St. west on Maple. Our hours are Monday through Friday from 6:30 a.m. until 6:00 p.m. We are closed for most major holidays, in line with work schedules for most major employers in the area. If you have any questions or comments, please call or e-mail our key staff members listed below. We would be happy to answer any questions you might have about our center and its programs, and will gladly allow parents of prospective students to tour our facility.

Acting Director.....	Erica Mason
	ericam@openarmswichita.com
Assistant Director/Business Manager	Michelle Anderson
	assistantdirector@openarms@gmail.com

*The Most
Licensed Funeral Directors
In Town*

*Celebrating over
100 years of local and
family ownership.*

Est. 1913



Downing & Lahey

- MORTUARY •
- CREMATORY •

East: 6555 E. Central • Wichita, KS 67206 • 316.682.4553

West: 10515 W. Maple • Wichita, KS 67209 • 316.773.4553



EquiShare
CREDIT UNION
I HAVE PEOPLE

Wherever you are on the road of life
We have the products and services to get
you on the road to financial success.

Savings, Checking, Certificates, IRA's,
Car Loans, Personal Loans, Mortgages,
Remote Deposit and more...

Since 1932, working together for our members



9100 W. Central
Wichita, KS 67212

405 E. Central
Wichita, KS 67202

(316) 263-6171
www.equishare.org



**Your Trusted Deck Sealing
& Floor Staining Company
Since 2005!**

Serving the Wichita KS Area

1455 N. Maize Rd, Suite B
Wichita, KS 67212

316-869-0734

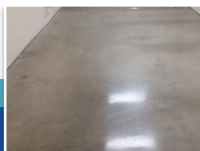
www.sealpro20.com



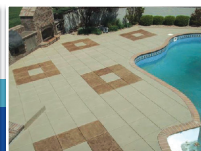
Concrete Overlays



Epoxy Flooring



Polished Concrete



Stained Concrete

New Patch Series From P.R.A.Y.

Bible Basics: RP3

Read to **P**icture, to **P**onder, to **P**ut into action

Read Bible stories together with families, Sunday school classes,
Scout groups ...anybody interested in the Bible!

FREE to download requirements from: www.praypub.org

For more information: **1-800-933-7729**

Bible-based Christian Education Programs



Patches & Pins
Available for Purchase

Our Ministries

Stephen Ministry

Stephen Ministry is a lay-caring ministry. Trained Stephen Ministers of Ascension know how difficult it is to ask for help, but they also know the great personal and spiritual growth and healing that follows. Christian care is provided in a nonjudgmental manner for a wide range of life-changing situations including death of a loved one, terminal illness, birth, family crises, loneliness, depression and job stress. If you or someone you know would like to visit with a Stephen Minister, contact Sharon Green-Lee at 316-208-6541.

Parish Nurse Ministry

Registered Nurses at Ascension promote healthy living by providing blood pressure checks on the 2nd Sunday of the month at Tyler Campus after the 8:30 worship service and prior to the 11:00 worship service. They also provide health information and informative monthly articles on health issues in the High Notes newsletter. For more information on Parish Nurse Ministry, contact Danette Burtness at 721-3162.

Adult Music Ministry

Ascension has a strong, multi-faceted music ministry. The Sanctuary Choir at the Tyler Campus is an adult choir that participates in three or four worship services per month. Hand-bell groups are active on both the Maple and Tyler campuses and participate regularly in our worship services. Opportunities abound for solo and ensemble offerings for those that are interested in sharing their talents for the Lord. For more information on Music Ministry, contact Susie Will at 259-7392, and at the Maple Campus, contact Kevin Gruetter at 613-9562.

Special Music Events

Special activities, concerts, and musical guests are also part of Ascension's music ministry. There are additional opportunities to be involved in small vocal groups, solos, duets, and other special ensembles. Our Praise Bands add wonderful music to worship services at our Maple Campus. Instrumentalists have opportunities to share their gifts also. Our Brass Ensemble participates in several services per year and is open to brass players of all ages. Instrumentalists are encouraged to provide solos, small ensembles, accompaniments for our choir, and to join together as an orchestra whenever possible. For more information at the Tyler Campus, contact Susie Will at 259-7392, or at the Maple Campus, contact Kevin Gruetter at 613-9562.



The Realtor Friends Refer to Friends

Todd Woodburn

ToddRealEstate@cox.net

316-312-0400



PLAZA REAL ESTATE

Knowledgeable & Successful In:

- Residential
- Commercial
- 1031 Exchanges
- Real Estate Consultation
- Investment
- Farm & Ranch

**Bank Anywhere.
Anytime.**



KANZA[®]
bank

Anthony · Kingman
Hutchinson · Wichita
www.kanzabank.com

Member
FDIC

PHIL HAMILTON
HEATING & AIR CONDITIONING, INC.

WICHITA, KANSAS 67204

(316) 832-0541



LIC# 1669

We accept



RESIDENTIAL • COMMERCIAL • SALES • SERVICE

Common Ground

Christian Education Ministry

Members of Ascension gather together on Wednesday evenings to participate in Bible study, fellowship, dinner time and to praise God through various means of worship. For example, *G Force* students and Sunday School children combine to present the Children's Christmas Worship each December. All children ages 3 and up are invited to participate. Adults are an important part of this Christian nurturing experience that encourages a personal relationship with Jesus Christ and enables them to share their faith with others. For more information, contact Cyndy Bressler, 734-1437.

GO! Lutheran Homeschool Outreach

Many homeschool families from Ascension and within the Wichita community come together to provide educational activities for children birth through high school. Various content classes for all the children are taught on Fridays, September through May, from 8:50 a.m.-11:30 a.m. at the Tyler Campus. Other events throughout the year are presentations from the community, chapel with vicar, and holiday parties. On the first Tuesday of each month during the school year, the home schooling teachers meet to discuss upcoming events and enjoy time together. Typically eight field trips are offered with varying ages, locations, and costs. There is a low family fee. For more information, contact the Co-Coordinator Maria McManamey at mdmcmanamey@gmail.com or Co-Coordinator at Christine_burkholder@yahoo.com, 207-6432.

Youth Ministry

www.ascension-lcms.org/youth

New Ground (Fourth, Fifth, Sixth): This group has many activities on the third Friday of each month at the Maple and Tyler campuses from 6:30-8:30 p.m. Other off-campus activities include roller skating, zoo overnights, Camp Lutherhoma, devotions, service projects, and fellowship.

Middle Ground: (7th and 8th graders) This group meets once a month on the second Friday at the Tyler Campus from 7:00-10:00 p.m. to play Lights Out. The event is called Lighthouse. The group also gathers for fellowship events, devotions, Laser Quest, various service projects, Youth Quake, Camp Lutherhoma, and to serve the hungry and homeless at St. Paul's four times a year.



Dr. Craig Lashley, D.D.S.
and
Dr. Rebecca Twietmeyer, D.D.S.

2105 N. Ridge Road
Wichita, KS 67212
316-773-1177

Complete Family and Cosmetic Dentistry
Accepting New Patients



OXLER FAMILY DENTISTRY

Dr. George Oxler / Dr. Jude Oxler
900 N. Tyler, Suite 2 Wichita, KS 67212
(316) 722-2596

MAXIMUM OUTDOOR EQUIPMENT & SERVICE

MAXIMUM SERVICE
MAXIMUM VALUE
MAXIMUM OUTDOOR



Husqvarna



TECUMSEH



SNAPPER



WALK-BEHIND
YOUR NEXT MOWER

KOHLER

WALKER MOWERS

Parts & Service for all brands of mowers.

943-0201

1002 So. West St.

Higher Ground: (9th-12th graders) This group meets every Wednesday evening from 6:00-8:00 p.m. at the Tyler Campus. They also gather for Bible study, fellowship and service events as well as the National Youth Gathering (NYG), District Youth Gathering (DYG), mission trips, Lutheran Valley Retreat (LVR), Teen Leadership Retreats, and to serve the hungry and homeless at St Paul's four times a year.

Youth may bring friends anytime. Guests are always welcome!

Information on Youth Ministry activities throughout the year are posted on the Youth Bulletin Boards in the narthex at both the Maple and Tyler Campuses throughout the year. If you would like more information or have any questions, please contact Cyndy Bressler at 734-1437 or cymbressler@yahoo.com.

Small Group Bible Study

Additional Bible study opportunities occur throughout the week.

Wednesday Adult Bible Studies meet at 10:00 a.m., 5:45 p.m., and 6:30 p.m. at the Tyler Campus during the school year.

Women's Bible Study meets at 7:00 p.m. on Tuesdays and Thursdays at the Tyler Campus during the school year.

Ascension Seniors

Ascension Seniors provides a wide range of activities for those 55 and older. Periodic outings include trips, cookouts, and other special events. Contact Sandra Childs at 641-6726.

Piece by Peace

Carol Trissell - 706-7978

Ascension LWML

The LUTHERAN WOMEN'S MISSIONARY LEAGUE (LWML) is a Synodical organization of women's societies within the congregations of the Lutheran Church-Missouri Synod. LWML provides missionary education, inspiration and service. Members gather for bi-annual meetings, and can also participate in monthly Circle meetings. Chairmen can answer any questions you may have about the services their circle provides.

Pressure Washer Sales & Service LLC

"Your Pressure Washer Headquarters"

(316) 263-9833

1645 SW Blvd. (K-42) • Wichita, KS

*Servicing All
Makes & Models*



**Cold Water & Hot Water
Parts & Accessories
Detergents
Service & Rentals
Floor Care Equipment**

PURCHASE • LEASE • RENT



www.pressurewashersalesandservice.com

Church Benefactors

Brand Plumbing, Inc.

2418 S. Hoover Road
Wichita, KS 67215-1203
www.brandplumbinginc.com

LWML Officers, Circles & Chairmen

President	Sharon Ailslieger	841-5936
Vice-President	Joyce Miller	794-2843
Secretary	Kim Fisher	393-2433
Treasurer	Kathy Germolus	641-3796

LYDIA Circle (Bible Study).... Laura Wolfsbauer 264-9452

JOURNEYS (Women's Ministry)..... Kim Fisher 393-2433

ELIZABETH Circle (Altar) Sharon Ailslieger 841-5936

Ascension Officers

ASCENSION LUTHERAN CHURCH OFFICERS

Ray Miller, President
Lonn Poage, Vice-President
Lori Zern, Secretary
Dale Soderstrom, Treasurer
Chris Trull, Financial Secretary
Tim Milleville, Tyler Campus Vice-President
Alan Gaul, Maple Campus Vice-President

ASCENSION LUTHERAN CHURCH COMMISSIONS

TYLER CAMPUS COMMISSION OF CARING

Becky Twietmeyer, Director
Sheila Esposito
Lynne Rahm
Sharon Ailslieger
Teresa Scoles
Chris Hockett

MAPLE CAMPUS COMMISSION OF CARING

Cyndy Bressler, Director
Barbara Gaul
Genelle Strong
Karla Hahn
Irma Whitehill
Joyce Hamm

COMMISSION OF EDUCATION

Janet Delanty, Director
Lynne Rahm
Linda Freed
Sarah Fleming
Lisa Schweikert
Emily Tingle

COMMISSION OF EVANGELISM

Linda Hickerson, Director
Mark Bradfield
Jeff Fleming
Jennifer Brown
Leon Lungwitz
Paula Fawcett
Shannon Balthrop

TYLER CAMPUS COMMISSION OF FINANCE

Steve Lundblade, Director

MAPLE CAMPUS COMMISSION OF FINANCE

Scott Hahn, Director

TYLER COMMISSION OF PROPERTIES

Mel Winter, Director
John Worm
Eldon Holle
Steve Koegeboehn
Bruce Lee
Jack Smith
Paula Wilson

MAPLE COMMISSION OF PROPERTIES

Erik Mason, Director
Ken Tingle
Terry Coates
Nick Oestmann
Randy Barnes
Dean Potter

COMMISSION OF STEWARDSHIP

Roger Hickerson, Director
Mary Patrick
Bill Murphy
Jane Eaton
Karen Babcock
Jack Wake

TYLER CAMPUS COMMISSION OF WORSHIP

Barb Tritsch, Director
JoAnn Hoggatt
Jeana Harpenau
Kim Mann
Deanna Milleville
Jon Tritsch

MAPLE CAMPUS COMMISSION OF WORSHIP

Cyndy Bressler, Director
Ann Sankey
Scott Hahn
Barbara Gaul
Dean Cranston
Debra Stepp

COMMISSION OF YOUTH

Chad Mercer, Director
Cyndy Bressler
Karla Hahn
Brandi Bolen
Pat Medlin
Becky Pena

Commission of Deacons

The commission of deacons is patterned after the New Testament deacon ministry where men of known spiritual life serve the congregation in specific areas. This ministry provides service to the congregation and walks along side members at critical stages in their spiritual development. If you are in one of these critical stages and have not been contacted, please let the deacon in that specific ministry know. Deacons Are Here To Serve You!

Birth to Baptism	Jess Herbig	316-285-6088
Confirmation.....	Mark Will	316-258-4500
Post High School, College, & Military:		
	Jerry Longabaugh	316-721-7838
Engagement and Newlywed.....	Vacant	
Assimilation & Retention.....	Brent Bressler	316-393-9029
In-Reach and Attendance	Vacant	
Elder Care	Keith Mann	281-961-2382
Holy Communion.....	Leland McKinley	316-617-5043
Grief and Loss	Tim Banta	316-208-5381
Staff Care	Hal Sankey	316-200-1030