



PILGRIM LUTHERAN

Save the lost
Strengthen the saved

2020 Guide Book & Directory

1731 St. Agnes Dr. | Green Bay, WI 54304

920-965-2233

www.pilgrimluth.org



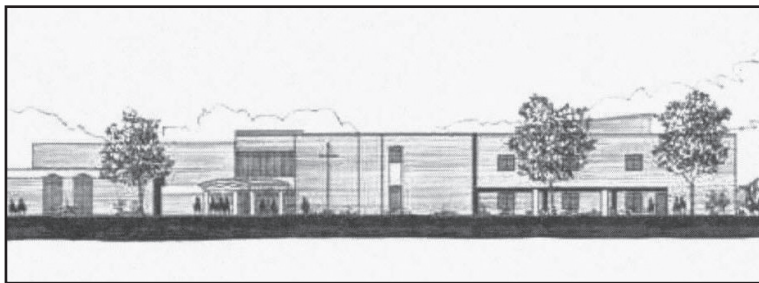
Pilgrim Lutheran

1731 Saint Agnes Drive, Green Bay, WI 54304

Church 965-2233; **School** 965-2244;

Fax 965-2255; **Daycare** 965-2234

www.pilgrimluth.org



Dear Members and Friends of Pilgrim,

The Bible tells us in Romans 12, “Just as each one of us has one body with many members, and these members do not all have the same function, so in Christ we who are many form one body, and each member belongs to all the others.” The Scripture reminds us of the joy and responsibility we have as “members of the body of Christ” at Pilgrim Lutheran.

Rejoicing in sixty-one years of God’s blessings, we seek to move forward in joyful anticipation of the good things He has in store for us. Thanking the Lord for His goodness in the past, we have a common purpose to “Save the lost and strengthen the saved.” We must work together as a body’s parts must work together so that we might fulfill that purpose in the future. Working together is the purpose of this Guide Book and Directory, provided at no cost, to every household. The cost is borne by those who chose to advertise in it. Please thank them for it.

Familiarize yourself with your Directory. You will see that it contains activities and schedules, vision as well as names and addresses. Use the Directory for what it is intended to be: a tool to help us be and build up the body of Christ.

Serving the Savior and You,

Pastor Scott Malme

Our Foundation & Vision

By following the example and direction of our Lord and Savior, Jesus Christ; through God's Word and Sacraments; and according to the traditions and confessions of the Lutheran Church-Missouri Synod, Pilgrim Lutheran Congregation will be a growing and Spirit-filled family of disciples reaching out to the community and world by using innovative and exciting ministries to help all people mature in the Christian faith.

Interested in Membership

One Saturday per month we offer the Inquirer's Class (8:00 AM-12 noon) for anyone who wants to know about the basic teachings of Lutheran Christians or is interested in membership. It is also a "refresher" course for current members.

This class is divided into four sessions. Anyone can start with a session at any time. The class meets once every month in the Conference Room. Contact the Ministry Office, 965-2233, for the date of the next class and what session it is (I, II, III or IV).

Ministry Office Staff Phone & Email Addresses

Rev. Scott Malme.....	(965-2268)	scottmalme@pilgrimluth.org
Rev. Michael Hanson	(965-2267) .	michaelhanson@pilgrimluth.org
Rebekah Schumacher.....	(965-2242)rebekahschumacher@pilgrimluth.org
John Schultz	(965-2269)	johnschultz@pilgrimluth.org
Kari Longmire	(965-2262)	karilongmire@pilgrimluth.org
Karen Duquette.....	(965-2233) ..	karenduquette@pilgrimluth.org
Dawn Kirchner	(965-2244)	anncartier@pilgrimluth.org
Ruth Schultz	(965-2237)	ruthschultz@pilgrimluth.org
Wendy Urfer.....	(965-2224)	wendyurfer@pilgrimluth.org
Ed Brunhoefer.....	(965-2264)	edbrunhoefer@pilgrimluth.org
Barb Hein.....	(965-2233)	barbarahein@pilgrimluth.org
Aaron Schroeder	(965-2249) .	aaron Schroeder@pilgrimluth.org

Pilgrim Lutheran School

Pilgrim Lutheran Church offers a 3 and 4 year old Day Care and Preschool through 8th grade to its members and the community. The mission statement of our school is to provide a Christian climate for instructing children in God's Word, preparing them to share their faith, so they are equipped to be witnesses of the Gospel and productive citizens in an ever-changing world.

Classes average 17 students in grades 1 through 8. The Kindergarten and Preschool classes both have full time aides to insure ratios of around 10 students to 1 staff member. Three additional teacher aides are provided to assist the primary grades.

Daily religious instruction is held throughout the grades with a weekly chapel service held on Wednesday morning. Class median scores are at the 85th percentile and above of the national achievement tests. Special programs include Guided Reading and Differentiated Math, Accelerated Reader, and foreign language for upper grades.

Extra-curricular opportunities include handbells, band, choir, soccer, volleyball, basketball, cheerleading, softball, track & field, outdoor education, academic competition, Glory Girls, and field trips. Yearly musicals are performed by children in grades 4K – 3rd and grades 4th – 6th during Christmas and in the spring of the year.

Technology and its use in the classrooms has become a number one priority here at Pilgrim. We are blessed with a Technology Director who services all aspects of technology. All computers are Windows 10, connected to the Pilgrim network through the WIFI. We currently have over 200 computers both laptops and desktops. We have 30 Chrome books and enough iPads for all students in grades 5-8 (2019-20 school year, with enough iPads for grades 1-4 in the 2020-21 school year), which are used in the classrooms for student instruction. We have a multi-device concept for student instruction.

Pilgrim Lutheran School is recognized as a fully accredited institution by the **National Lutheran School Accreditation (NLSA)** agency, which maintains a rigorous process of self-evaluation along with a site visit conducted by an independent committee. This 5-year process enables the school to work on a school improvement plan. Pilgrim is also recognized as a **Wisconsin Parental Choice Program (WPCP)** school. This program enables parents to secure funding for a Pilgrim education via the State of Wisconsin after verification of residency and income.

The staff of Pilgrim would be honored if you entrusted them with the instruction and spiritual development of your child. Please visit us and experience the commitment of both the Pilgrim congregation and our professional educators to minister to children.

NEW Lutheran High School

NEW Lutheran High School is distinctively different. We are not satisfied with being just another high school. Students here receive the required high school curricula plus religion in an environment where students and faculty function as the “Body of Christ.” This approach places a premium on quality education and stresses a Christian worldview. It fosters concern for one another and useful service to all people. We take great pride in our mission of ***Helping Families Prepare Christian Leaders***, which is something our world desperately needs.

NEWLHS is accredited by both NLSA and AdvancEd to ensure an exceptional Christian education. NEWLHS has also won two awards from the ACT testing service for continued and sustained academic excellence. With recent advances in STEM education, college course offerings, AP classes, a 1:1 iPad learning environment and service learning opportunities throughout the year, NEW Lutheran High stands out as Green Bay’s premier Christian high school.

Extra-curricular activities have also always been an important aspect of the school’s mission. Our sports activities include Boys’ and Girls’ Soccer, Softball, Baseball, Cross Country, Boys’ and Girls’ Basketball, Football, Girls’ Volleyball, Golf, Track & Field and Dance Team. Our Christian coaching staff helps young people excel in sports and in life.

Fine arts are just as important at Lutheran High! Musical groups include several different small and large instrumental and vocal groups to choose from and they are showcased many times throughout the school year at local venues, at concerts and in our community. Theater productions are offered in the winter and spring as well, with performances taking place on campus or at the Neville Public Museum. In addition, several academic extracurricular opportunities are offered in forensics, robotics, math team, and a math and science team that competes in Chicago.

NEW Lutheran High is proud to be a full service school that offers an exceptional education with a strong emphasis on a Biblical worldview in our students.

With over \$75,000 in tuition aid available and the ability to receive a full tuition voucher to attend through the Wisconsin Parental Choice Program, there has never been a better time to attend Lutheran High and we’re proud to be Pilgrim’s choice for secondary education. Contact Info: Chris Nelson, Executive Director call/text him on his cell at 920-471-5754 or e-mail to nelsonc@newlhs.com

NEW Lutheran High School

1311 S. Robinson Avenue

Green Bay, WI 54311

920-469-6810



woodsideseniorcommunities.org

Services & Facilities

-  Rehabilitation
-  Skilled Nursing
-  Assisted Living
-  Memory Care
-  Independent Living

Woodside
Senior Communities

A Lutheran heritage. Serving all faiths.

1040 Pilgrim Way | Green Bay, WI 54304 | 920.499.1481 | info@woodsideslh.org

Bible-based Christian Education Programs

New Patch Series From **P.R.A.Y.**

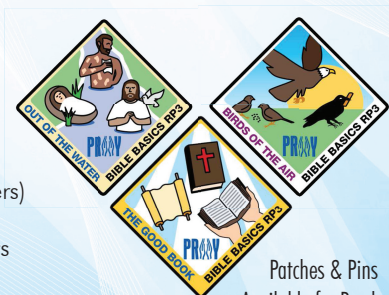
Bible Basics: RP3

Read to Picture, to Ponder, to Put into action

Read Bible stories together with families, Sunday school classes, Scout groups ...anybody interested in the Bible!

For All Ages (Including Parents and Leaders)

Perfect for Campouts or Weekend Retreats
(Three 45 Minute Long Sessions)



Patches & Pins
Available for Purchase

FREE to download requirements from: www.praypub.org

For more information: **1-800-933-7729**

Our Ministry Staff

Preschool	Mrs. Cindy Muther
Kindergarten (4 yr. olds)	Mrs. Christine Malme
Kindergarten (5 yr. olds)	Mrs. Eileen Bordeleau
Kindergarten (5 yr. olds)	Mrs. Tovah Wingerter
Gr. 1	Mrs. Kari Williams
Gr. 2	Mrs. Erin Schaefer
Gr. 3	Mrs. Patti Giovanetti
Gr. 4	Mr. Duane Longmire
Gr. 5	Mrs. Lynnette Hansen
Gr. 6	Mrs. Kelly Schumm
Gr. 7	Mr. Mike Schumm
Gr. 8	Mr. Jeremy Schultz
Aides	
3 yr. old Preschool	Mrs. Stephanie Zinkel
4 yr. old Kindergarten	Mrs. Stephanie DeMelle
5 yr. old Kindergarten	Mrs. Amy Van De Yacht
Grades 1 & 2	Mrs. Sara Zeitler
Grades 3 & 4	Mrs. Wendy Urfer
Music Director/Teacher	Mrs. Kari Longmire
Band Director	Mr. Jacob Van Dyke
Science Teacher	Mrs. Lisa Medenwald
Part-time German Teacher	Mr. Keith Halverson
Part-time Teacher	Mrs. Lisa Dhein
Principal	Mr. John Schultz
School Secretary	Mrs. Dawn Kirchner
Church Secretaries	Mrs. Karen Duquette & Mrs. Ruth Schultz
Pastors	Rev. Scott Malme & Rev. Michael Hanson
Bookkeeper	Mr. Ed Brunhoefer
Youth & Family Ministries Director	Rebekah Schumacher
Technology Director	Aaron Schroeder
Caring Ministries Coordinator	Barb Hein
Day Care Director	Trudy Goderstad
Discipleship Coordinator	Wendy Urfer
Lunch Director/Coordinator	Kim Zimmerman
Children's Ministry Director	Jenny Erickson
Volunteer Coordinator	Jenny Andrew-Tryon
Head Custodian	Dale Rusch
Custodian	Lisa Jensen
Custodian	Brenda King

Those Who Serve Us

The Church Council and Boards

Chairman:

The Chairman guides the congregation in all matters of congregational business, and presides at all meetings of the Voters Assembly and Church Council, conducting them in an orderly and Christian manner.

Vice Chairman:

The Vice Chairman fulfills the duties of the Chairman in his absence or in case of a vacancy in the office of Chairman.

Recording Secretary:

The Recording Secretary keeps accurate minutes of all Voters Assembly and Church Council meetings and handles official correspondence to the congregation. He/she also serves as parliamentarian.

Treasurer:

With the assistance of a part time bookkeeper, the Treasurer keeps an accurate record of all receipts and disbursements, pays bills and reports the financial status to the Voters Assembly and the Church Council.

Financial Secretary and Board of Finance:

The Financial Secretary, assisted by the Board of Finance, receives, records and deposits all congregational monies including offerings, contributions, collections, bequests, etc., and reports receipts to the Treasurer.

Board of Elders:

The Board of Elders, as assistants to the Pastor(s), are responsible for the proper conduct of worship services, the spiritual and general welfare of the congregation, and for the physical welfare of the Pastor(s) and his family.

Board of Trustees:

The Board of Trustees is responsible for the repair and maintenance of the physical properties of the congregation. They represent the congregation in all legal and documentary transactions such as securing loans and insurance, and are responsible for all valuable papers such as deeds, documents, certificates, insurance policies and other assets.

Board of Christian Education:

The Board of Christian Education promotes the welfare of the Christian Day School, Preschool, Daycare and Before/After School programs.

They develop and administer the budget for these educational programs, appraise the educational plans, select or approve curricula, educational materials and faculty, and are responsible for providing adequate equipment, cleanliness and discipline.

Board of Evangelism:

The Board of Evangelism plans, promotes and implements an outreach program in the congregation and the community designed to bring the unsaved to faith, the un-churched to worship, welcome guests, and integrate new members into the life and work of the church.

Board of Christian Life and Growth:

The Board of Christian Life and Growth provides education to the membership in Christian management of all of God's resources so that members make use of their time, talents and financial resources for the sake of the Kingdom.

Board of Youth Ministries:

The Board of Youth Ministries works to provide spiritual growth and nurture Christian fellowship among members of the congregation from the sixth grade through college undergraduate level. They organize and supervise the Youth Sunday morning Bible studies, youth confirmation, and carry out a year-round program of activities suitable to Christian youth.

**Delegates to N.E.W. Lutheran High School Association's
Assembly of Delegates:**

Delegates represent the congregation at the Association's Assembly and serve as a liaison. They keep the congregation informed of the activities and progress of the Association, encourage recruitment of students and foster support for the Association.





RESOURCE ONE
REALTY LLC

Cell 920.217.7653
www.Barb4homes.com

BARBARA YAEGER

Broker/Associate

ABR, CRS, GRI, SRES
#1 Sales Agent – Resource One Realty LLC 2019
Member of Pilgrim Lutheran Church



“Working Sign Up to Sign Down”



BY CHOICE HOTELS

- Over 20,000 Square Ft. of Meeting and Banquet Space
- Meeting and Banquet Facilities for up to 1,000
- Funeral Luncheons Available
- Award Winning Sunday Brunch

920-497-4701
www.comfortsuitesgb.com

1951 Bond Street, Green Bay



Locally-Owned and Operated



LYNDAHL

Funeral Home & Cremation Services

- Chapel seating for up to 150
- Hospitality room for family and friends
- Providing traditional and cremation options
- Pre-planning available with prepayment options

1350 Lombardi Avenue • Green Bay WI 54304 • 499-1223 • www.lyndahl.com

Pilgrim Lutheran Church 2019-20 Officers & Board Members

Officers of the Council

Chairman: Scott Schlender

Vice Chairman: Les Heimerman

Treasurer: Mark Hein

Secretary: Harry Olp

Financial Secretary: Dorothy Kahler

Board of Trustees

Chairman: Mark Osterberg

Dan Koetz

Joe Kahler

Matt Schantz

Dale Braun

Board of Elders

Chairman: Jim Schuettelpelz

Vice Chairman: Dan Urfer

Mike Tiedt

Dan Allen

Scott Cherveney

Corbin Keller

Scott Nier

David Baye

Bill Gipp

Jeff Anderson

Larry Seyferth

Brian Wittnebel

Mike Pedersen

Arlen Baumann

Craig Erickson

Bob Charles

Jerry Ganz

Tom Kosman

Bob Kraszewski

Board of Christian Life & Growth

Chairperson: Mark Williams

Jason Albertz

Rachel Patrycia

Devon Habermeyer

Katie Monfre

Rick Moericke

Board of Christian Education

Chairperson: Phil Kirchner

Vice Chairman: Kim Brabazon

Secretary: Greg Gerbers

Dave Jones

Jake DeMelle

Jesse Brunette

Holly Reineking

Nancy McTavish

Board of Parish Ed.

Jenny Erickson
Bob Bain

Libby Larson

Board of Evangelism

Chairman: Tracy Wahlen

Lee Larsen
Jeff Vogt

Roy Miller
Dick Buchholz

Board of Youth

Carrie Belovsky
Mike Schumm
Justin Brockman
Caitlin Wheeler

Ben Malme
Vicar (current)
Rebekah Schumacher
Brad VanLanen

Endowment Board

Chairman: Harry Olp

Dale Bartel
Bob Hutter
Sally Luehring

Chris Hendricks
LuEllen Oskey
John Goetsch

NEW Lutheran High School

Representative: Andrea Berg

Worship Services

Suamico Site 2999 Lakeview Dr.

Blended Worship..... Sundays at 9:00 AM
Bible Studies & Sunday School Sundays at 10:15 AM
Please see bulletin and newsletter for more information and details.
Meets every Sunday (except holidays) September-May.

Green Bay Site 1731 St. Agnes Drive

Midweek Worship (WoW) Wednesdays 7:00 PM
Traditional Worship Saturday 5:00 PM and Sundays at 7:45 AM & 9:00 AM
Contemporary Worship Sundays at 10:30 AM
Sunday Bible Studies 8:00 and 9:00 AM
Meet in schoolrooms and church meeting rooms.
Various topics, teachers, locations and formats. Please see bulletin
and newsletter for more information and details regarding these Bible
Study opportunities. Most are September – May (except holidays).
Sunday School 9:00 AM
Available for children ages 3-6th grade
Meets every Sunday (except holidays) September-May.
Sunday School begins with opening Praise Time in the gym.

Midweek Bible Studies

Monday

Bible Study (Fellowship Hall) 9:45 AM
People of all ages are invited to attend. Various topics will be
discussed. Contact person: Pastor Malme, 965-2268

Tuesday

Young Adult Bible Study (offsite locations) 6:00 PM
Young Adults ages 20's – 30's meet for dinner & Bible study twice a
month. Contact: Rebekah Schumacher, 965-2242

Wednesday

Men's Bible Study (Church Library) 6:45 AM
Various topics are discussed. This group is open to men of all ages.
Contact person: Ray Klebesadel, 494-4372

Ladies Bible Study (Rm # 244) 9:30 AM
Bible Study for ladies of all ages. Led by Jane Watermolen, 469-0390.

Bible Study (Youth Room) 9:30 AM
Bible Study on various topics following Chapel. Contact person:
Pastor Hanson, 965-2267

*Peace of mind
is yours at . . .*



Karen Bain, Church Member

Locations

HOWARD

713 Cardinal Lane
Green Bay, Wisconsin 54313
(920) 434-9600

STURGEON BAY

817 Circle Ridge Place
Sturgeon Bay, Wisconsin 54235
(920) 743-9289

*Dedicated professionals serving your
loved ones and their needs since 1991.*

Church Benefactors

BLINDAUER

SHEETMETAL & ROOFING, INC.

Dean Englebert
Commercial & Residential
1227 S. Broadway • 437-1332
www.blindauerroofing.com

GREEN BAY VACUUM & SEWING

Sales & Service
Authorized Oreck Dealer
505 S. Military • (920) 499-2728
www.gbvacuums.com

THE UPS STORE

Color Prints, Packaging, Mailboxes
Notary Service
USPS, UPS, Spee-Dee Delivery
2 Locally Owned Locations
101 S. Military Ave. (920) 498-1991
2221 S. Webster Ave. (920) 884-6681
www.theupsstorelocal.com/4170

- Adult Bible Study** (Conference Room) 6:00 PM
Bible Study on Defending the Faith. Led by Phil Korth.
- High School Youth Nights** (Fellowship Hall) 8:00 PM
Small group studies & fellowship on select Wed. evenings. Contact
Rebekah, 965-2242.

Thursday

- Ladies Bible Study** (Church Library) 1:00 PM
For ladies who want to “dig deeper” into God’s Word through weekly
group study and daily personal study.
Led by Carolyn Fiedler, 496-0849.

3rd Saturday of the Month

- Men’s Breakfast Bible Study & Fellowship** 7:30 AM
This group is open to men of all ages as they spend time in fellowship,
sharing, and studying principles of how to be a godly man and a leader.
Come when you can and spend time with “brothers in Christ.” We’ll be
eating breakfast, too, of course! Contact person: Larry Seyferth,
608-212-0467.

A variety of other Bible study groups meet for “specially scheduled” dates and times throughout the year. Our weekly news Announcements and our website www.pilgrimluth.org are a good way to stay informed about these special study groups.

Fellowship Opportunities

Men’s Basketball - held October thru March, 6:45 AM in Pilgrim’s gym.
Men (18 years and older) of all skill/unskilled levels are invited to
attend for fun, exercise, fellowship and prayer. For more information,
contact Mark Osterberg, 497-4508.

Lutheran Women’s Missionary League - women of the church are
welcome to visit or join this group. **LWML** is a national organization
through the Synod that cares about mission work. The women help
raise money thru “mite boxes” collecting coins that are used for
missionary support. This group helps keep the church informed as to
what is going on in the mission field. They meet quarterly throughout
the year. For more information, contact Karen Schuettpeitz, 469-0751.

Men’s Ministry - men of all ages are invited to join in this ministry. This
group has helped many people with jobs around the house, too big for
them to handle alone (i.e., installing a garage door opener, remodeling
a bathroom). They have also helped to purchase items for the church
(i.e., big screen T.V., various types of Bibles to hand out to youth).
This group doesn’t formally have meetings but they have a Saturday
morning breakfast/Bible study every third Saturday. *Refer to Bible
Studies page for more details.* Contact person: Bob Bain, 608-224-9821
or Larry Seyferth, 608-212-0467.

Cover Girls (Quilters) - this group is for both seasoned and brand new quilters, all ages. This group meets the first and third Wednesday of each month. The ladies not only make some beautiful quilts but enjoy wonderful Christian fellowship with lots of laughter. Contact Pat Syring, 494-0010 if interested.

Co-ed Adult Volleyball - adult men and women meet on Sundays at 5:30 PM (September - May) to play in the gym.

Church & Community Service Opportunities

Send-A-Card Ministry - a group of volunteers send cards to members who are ill or lost a loved one. For more information, contact Linda Siegmann, 498-9681.

Decorating - serve on a team to decorate the church for Christmas and Easter. Contact Ministry Office, 965-2233.

P.A.C.K. (Planned Acts of Christian Kindness) - Pilgrim hosts monthly servant evangelism events throughout the community. Contact Lee Larsen, 494-3567.

Evangelism - Tuesdays at 6:30 PM. Call on first-time guests who attended worship the preceding week. This visit is a friendly 'thank you' for visiting Pilgrim. Answer questions the guest may have about Pilgrim and its ministries, and extend an invitation to come again. Contact our current vicar, 965-2256.

Nursery - help provide care for children on Sunday mornings or at special events at Pilgrim. On Sunday mornings during the 9:00 and 10:30 AM worship services the nursery cares for children up to 4-years-old. Care is also provided for infants and small children at special events. Serve as scheduled. For more information contact Stephanie Evans at 264-2319.

Prayer Chain - use a "mailing" list to pray for people in emergency or crisis situations. For more information, contact Julie Baye, 499-9973.

Counters - count the church offerings and miscellaneous income. Contact Karen Duquette, 965-2233, in the Ministry Office.

Bulletin Assembly - work with a team to assemble worship bulletins every Thursday at 9:00 AM. Contact Karen, 965-2233, in the Ministry Office.

Newsletter Assembly - work with a team for about 2 hours to prepare newsletter for mailing. Assist in placing address labels, taping edges of newsletter, sorting for bulk mail and stuffing church mailboxes. Meets the last Wednesday of the month at 9:00 AM. Contact Ruth Schultz 965-2237 in the Ministry Office.

Grounds Care - Landscape Legacy - provide assistance for work days planned throughout the year and care for the landscaping at both Pilgrim sites. Work days are scheduled as needed. Contact Ministry Office, 965-2233.

Worship Support

Praise Band Teams - this group of instrumentalists leads the Sunday 10:30 AM Contemporary Worship. Standard rhythm section band instrumentation is utilized: acoustic and electric guitars, bass, keyboards, drums and percussion. Rehearsals are scheduled by the individual teams. For more information, contact Christine Malme, 494-4554.

Praise Vocal Ensemble Teams - this group of vocalists facilitates the Sunday 10:30 AM Contemporary Worship. Typically in ensemble groupings of 3 or more people, these vocalists provide the primary worship leadership of the singing within the church service. Rehearsals are scheduled by the individual teams. For more information, contact Christine Malme, 494-4554.

Instrumentalists - individuals can play at Easter and Christmas services or other services during the year. For more information, contact Kari Longmire, 965-2262.

Ushers - serve on a team to support worship services - greet, seat people, distribute worship bulletins, collect offering, count attendance. Teams serve for assigned weeks throughout the year. For more information, contact Wendy Urfer, 965-2224.

Altar Guild - serve on a team, as scheduled, to set up the altar for Communion Worship on the 1st, 3rd, and 5th weekends and the 2nd and 4th Wednesdays for WOW. For more information, contact, Kris De Clerc, 498-0182.

Greeters - greet people, members and guests alike, at worship times as assigned. Offer a friendly, warm welcome to Pilgrim, help direct people to ministry areas, and in general, act as ambassadors for Pilgrim. Rotating schedule. Contact Wendy Urfer, 965-2224.

Adult Choir - meets every Thursday from 6:30-7:30 PM in the church. People of all ages and levels are invited to join this group. The choir sings at various services throughout the year. For more information, contact Kari Longmire: 965-2262.

Welcome Center - located in the narthex. Rotating schedule for weekend worship and weekdays during the school year. School year attendants help to keep a secure building. Welcome people and hand out various items as directed by the Ministry Office. Contact Wendy Urfer, 965-2224.

Recovery Ministry

“GriefShare” Grief Support Group - Through this group many people who have recently had a loved one die are able to have a place to share their experiences with others who have experienced similar trials. The group meets for 13-week sessions several times a year in the Conference Room at Church on a Monday evening at 6:30 PM. Please contact Carol Krueger, 499-1759; or the Ministry Office, 965-2233 for more information.

Stephen Ministry - motto is “Christ Caring for People through People”. The Stephen Series equips lay people to provide an effective caring and listening ministry to those who are hurting with any number of concerns (loss of loved ones, divorce, illness, etc.). When a potential care-receiver is brought to our attention, the Stephen Leaders will assign a trained minister to serve that individual for as long as the need requires. This relationship will remain completely confidential and will generally involve a one hour visit each week. If you are interested in becoming a Stephen Minister or if you know of a potential care-receiver, please call Nancy Kraszewski, 869-1818.

Youth Ministry

Mission Statement

The Youth Ministry mission is to prepare youth for lifelong works of service to Christ by developing a Christian community that studies the Word, worships, builds self-esteem, supports one another, strengthens through recreation and reaches out in love.

Glory Girls

The purpose of Glory Girls organization is to give the girls of the church the opportunity for the wholesome use of time in organized activity, to appreciate and practice Christian fellowship, to use and develop their God-given talents and abilities to the glory of His name. Glory Girls is for girls ages 7-13. They meet 1-2 times a month.

Youth (7th to 12th grade)

The youth have separate Junior and Senior youth activities (Junior-6th to 8th and Senior-9th to 12th) including service projects, servant events, fellowship events, National Youth Gatherings, fundraisers, and opportunities in worship. Our parents are a cornerstone to this ministry! Come and be involved! Every third Wednesday grades 7-12 meet for a game night after WoW.

Confirmation

Confirmation is for 7th & 8th grade students. Day school students receive confirmation during their religion class time. A mid-week confirmation class for all other students meets weekly on Wednesday evenings in the Fellowship Hall, 6:00 PM-7:45 PM and includes a variety of teaching, fellowship and service opportunities.